

# Product Range

---

2025 BROCHURE



  
**SWEETBIRD®**  
BRISTOL ENGLAND

**ZUMA**

**BRISTOL®  
SYRUP CO.**  


 **blendtec®**  
COMMERCIAL



Sweetbird is all about getting creative with ingredients and flavours, then pouring this into everything they do so you can make drinks that look and taste delicious every time. Obsessed with perfection, Sweetbird travel the globe to spot new trends and continually experiment with ingredients and recipes – all while steering clear of artificial preservatives\* and colourings. This helps ensure the Sweetbird product range not only tastes exceptional but delivers the innovation, versatility and simplicity customers are looking for.



Follow @hellosweetbird for recipes, product news and inspiration



\*except pureé, Liquid Frappé & Granita Base, sugar-free syrups, hazelnut and toffee nut syrups.



SYRUP



CLASSIC SYRUPS (1Ltr)

FLAVOUR	PO CODE
Almond	NSB100
Amaretto	NSB101
Brown Sugar	NSB118
Cane Sugar	NSB102
Caramel (SF)	NSB103
Chai	NSB104
Chocolate	NSB105
Cinnamon	NSB107
English Toffee	NSB108
French Vanilla	NSB109
Gingerbread	NSB110
Hazelnut (SF)	NSB111
Irish Cream	NSB112
Mint	NSB113
Speculoos	NSB117
Vanilla (SF)	NSB114
White Chocolate	NSB115



(SF) these syrups are also available in our sugar-free collection, on the page opposite

CREATIVE SYRUPS (1Ltr)

FLAVOUR	PO CODE
Butterscotch	NSB200
Caramelised Almond	NSB223
Chilli	NSB201
Cinnamon Bun	NSB220
Coconut	NSB202
Eggnog (seasonal)	NSB203
Honeycomb	NSB212
Mince Pie	NSB222
Peanut Butter	NSB205
Pistachio	NSB219
Praline	NSB224
Popcorn	NSB221
Pumpkin Spice (seasonal)	NSB206
Rose	NSB218
Salted Caramel (SF)	NSB207
S'mores (seasonal)	NSB208
Toasted Marshmallow (seasonal)	NSB209
Toffee Nut	NSB216



(SF) this syrup is also available in our sugar-free collection, on the page opposite  
(seasonal) these syrups may not be available all year round as they are produced for certain seasons

SYRUP



BOTANICAL SYRUPS (1Ltr)

FLAVOUR	PO CODE
Hibiscus	NSB454
Lavender	NSB455
Mojito Mint	NSB456
Rose	NSB450



All Sweetbird syrups:

- Packaging Case: 6 x 1 litre
- 30% Post-consumer recycled plastic bottles
- Registered with The Vegan Society



LEMONADE SYRUPS (1Ltr)

FLAVOUR	PO CODE
Lemonade	NSB600
Raspberry & Pomegranate	NSB602
Pink Guava & Lime	NSB603



SUGAR-FREE SYRUPS (1Ltr)

FLAVOUR	PO CODE
Caramel	NSB500
Hazelnut	NSB502
Lemon Iced Tea	NSB509
Peach Iced Tea	NSB504
Raspberry Iced Tea	NSB507
Salted Caramel	NSB506
Unflavoured	NSB505
Vanilla	NSB503



SYRUP



FRUIT SYRUPS (1Ltr)

FLAVOUR	PO CODE
Banana	NSB300
Cherry	NSB302
Dragon Fruit & Papaya	NSB315
Grenadine	NSB313
Lime	NSB304
Orange	NSB305
Peach	NSB307
Raspberry	NSB309
Strawberry	NSB310
Watermelon	NSB314



ICED TEA SYRUPS (1Ltr)

FLAVOUR	PO CODE
Cherry Blossom Iced Tea	NSB407
Cucumber & Mint Iced Green Tea	NSB405
Iced Tea	NSB400
Jasmine Lime Iced Tea	NSB401
Passionfruit & Lemon Iced Tea	NSB402
Peach Iced Tea (SF)	NSB403
Raspberry Iced Tea (SF)	NSB404
Sugar-free Lemon Iced Tea	NSB509
Watermelon Iced Green Tea	NSB406



(SF) these syrups are also available in our sugar-free collection, which can be found on the previous page

RETAIL SYRUPS (6 x 250ml glass bottles)

FLAVOUR	PO CODE
Caramel	NSB701
Hazelnut	NSB703
Vanilla	NSB702

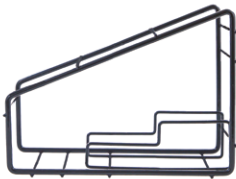


SYRUP



DISPLAY STAND

A038



SYRUP PUMP

A035





FRAPPÉ



FLAVOUR	PO CODE
Caffé (vegan)	B361D
Chocolate	B365D
Cookies & Cream	B359D
Mocha	B362C
Sticky Toffee	B364D
Vanilla Bean (vegan)	B363D
Liquid Frappé & Granita Base (vegan)	B358



- Packaging:
  - Tubs - 2 x 2kg tubs
  - Bags - 4 x 1kg bags
  - Liquid Frappé and Granita Base - 4 x 1.9 litre bottles
- Free from artificial colours and flavours
- Free from preservatives \*
- Registered with The Vegetarian Society
- Liquid Frappé & Granita Base, Vanilla Bean and Caffé Frappés registered with The Vegan Society

\*except Liquid Frappé & Granita Base



LARGE SCOOP 60CC

A051 - For use with Sweetbird Frappés



FRAPPÉ & GRANITA PUMP

A044



PUREÉ

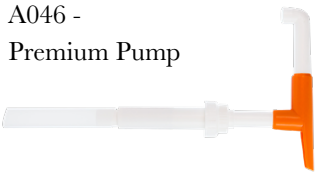


FLAVOUR	PO CODE
Banana	B601A
Mango	B603A
Passionfruit	B604A
Raspberry	B605A
Strawberry	B606A



- Packaging - 6 x 1 litre bottles
- Made with real fruit
- Free from artificial colours
- Gluten and dairy free
- Registered with The Vegan Society

A046 -  
Premium Pump



SMOOTHIE



FLAVOUR	PO CODE
Mango & Passionfruit	B398B
Mixed Berry	B397B
Peach	B392B
Strawberry	B395B



- Packaging - 8 x 1 litre cartons
- Free from artificial colours, preservatives and flavours
- Made with real fruit
- Registered with The Vegan Society



SWEETBIRD.COM



# ZUMA

Zuma has been creating their collection for almost 20 years, ensuring there's a drink for everyone. The hot chocolate blends are original, dark, single origin, Fairtrade, thick and white. Zuma have also created sauces, chai, toppings and plant powders\*. The range is simple, just like the ingredients. It's not that Zuma are stubborn - they just won't compromise when it comes to taste and quality.



Follow @zuma.drinks or visit [zumadrinks.com](http://zumadrinks.com) to see all they have to offer



\*Turmeric Chai includes natural flavourings that are not plant based



HOT CHOCOLATE

ZUMA

FLAVOUR	PO CODE	Packaging - 4 x 2kg tins
Dark - 33% cocoa (bags)	B302C	
Dominican Republic - 35% cocoa (bags)	B323	
Fairtrade Dark - 33% cocoa (tins)	B307C	
Original - 25% cocoa (bags)	B304C	
Original - 25% cocoa (tins)	B305C	
Thick (tins) - 25% cocoa	B306C	
White (bags)	B308C	

- Free from artificial colours, flavours and preservatives
- Registered with The Vegan Society (except White Chocolate)

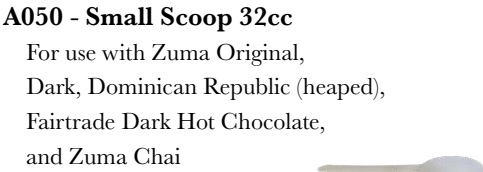
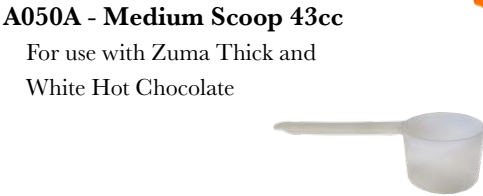
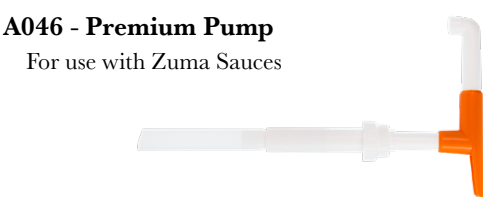


SAUCES

ZUMA

FLAVOUR	PO CODE	• Free from artificial colours
Caramel	B923	• White and Caramel Sauce registered with The Vegetarian Society
Dark	B920	
White	B922	• Dark Sauce registered with The Vegan Society

Packaging - 4 x 1.9 litre bottle



CHAI

ZUMA

FLAVOUR	PO CODE	
Spiced	B366C	
Vanilla	B367C	
<ul style="list-style-type: none"><li>• Packaging - Case 4 x 1kg tins</li><li>• Free from artificial colours, flavours and preservatives</li><li>• Registered with The Vegan Society</li></ul>		



PLANT BASED POWDERS\*

ZUMA

FLAVOUR	PO CODE	
Beetroot	B375	
Matcha	K040A	
Turmeric Chai	B368	

- Packaging - Case 10 x 100g pouches
- Registered with The Vegan Society
- No added sugar

\*Turmeric Chai includes natural flavourings that are not plant based



TOPPINGS

ZUMA

TOPPING	PO CODE	
Biscuit Crumb	G106	
Strawberry Pieces	G107	
Mini Marshmallows	B5001	

- Packaging:
  - Case 8 x 250g pouches - Biscuit Crumb
  - Case 8 x 30g pouches - Strawberry Pieces
  - Case 4 x 1Kg bags - Mini Marshmallows
- Biscuit Crumb and Strawberry Pieces Registered with The Vegan Society



ZUMADRINKS.COM



# BRISTOL<sup>®</sup> SYRUP CO.

**The Bristol Syrup Company is a collaboration between Beyond the Bean and the best of Bristol bartenders, distilling down years of experience to create a range of quality cocktail syrups and purées .**

From classic bar staples like orgeat and vanilla through to innovative, award-winning shrubs, sherbets and disco, our syrups are designed for bartenders. We believe the quality and taste of syrup should be as well considered as the chosen spirits, juices and fruits, which is why they are made in our Bristol based syrup plant, with British sugar.

Our syrups are favoured by bartenders around the country, stocked in over a third of the UK's top 50 Cocktail Bars 2023 and chosen by both high-volume bars such as Fridays and luxury venues like Claridge's.

We're proud to introduce new fruit purées and juices to the Bristol Syrup Company collection in 2023.

Visit [bristolsyrupcompany.com](https://bristolsyrupcompany.com)  





SYRUP

FLAVOUR	PO CODE
No.1 Simple 1:1	BSC001A
No.2 Simple 2:1	BSC002A
No.3 Demerara	BSC003A
No.4 Raspberry	BSC004A
No.5 Passionfruit	BSC005A
No.6 Grenadine	BSC006A
No.7 Orgeat	BSC007A
No.8 Elderflower	BSC008A
No.9 Falernum	BSC009A
No.10 Coconut	BSC010A
No.11 Pineapple & Coconut	BSC011A
No.13 Raspberry Shrub	BSC013A
No.14 Cherry & Vanilla	BSC014A
No.15 Vanilla	BSC015A

FLAVOUR	PO CODE
No.16 Strawberry Shrub	BSC016A
No.17 Watermelon	BSC017A
No.18 Lime Sherbet	BSC018A
No.19 Disco Grenadine	BSC019A
No.20 Grapefruit Sherbet	BSC020A
No.21 Ginger	BSC021A
No.22 Mulled Spice	BSC022A
No.23 Yuzu Sherbet	BSC023A
No.24 Disco Blue	BSC024A
No.25 Disco Bubblegum	BSC025A
No.26 Caramel	BSC026A
No.27 Nogave	BSC027A
No.28 Blackberry Shrub	BSC028A



PURÉES

FLAVOUR	PO CODE
Lime Juice	BSC101
Lemon Juice	BSC102
Mango Purée	BSC103
Passionfruit Purée	BSC104
Raspberry Purée	BSC105
Strawberry Purée	BSC106
Peach Purée	BSC107







Blendtec are the best, most reliable blenders on the market, designed for the high volume of ice blended drinks customers need. They're the worldwide industry standard and are powerful, tough and clever too. All Blendtec blenders have pre-programmed variable speeds, auto shut off & drinks cycles that ensure consistently blended drinks every time.

With models to suit all requirements, and budgets, they have the perfect blender for you and your business.





BLENDERS



**V208 - Connoisseur 825**  
No jars



**V213 - Stealth 885 Blender**  
No jars



**V203 - SpaceSaver 825**  
No jars



**V121A - Stealth**  
Sound Enclosure



**V121 - Connoisseur**  
Sound Enclosure



**V122A - Connoisseur**  
Motor Enclosure

RAPID RINSER

- V133 - Rapid Rinse Station - full kit (on-counter instillation)
- V134 - Rapid Rinser - only (in-sink instillation)
- V135A - Rapid Rinser, Lid Attachment
- V136 - Rapid Rinser Suction Cup Feet



JARS & LIDS



**V111A - FourSide 1L**  
Lid not included



**FourSide 1L  
Jars & Hard Lid Set**  
V111J - FourSide Pink  
V111H - FourSide Yellow  
V111Q - FourSide Blue



**V112A - WildSide 1.5L**  
Lid not included



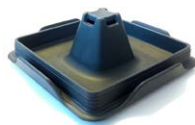
**WildSide 1.5L  
Jars & Hard Lid Set**  
V112F - WildSide Pink  
V112E - WildSide Yellow  
V112G - WildSide Blue



**V111M - Cold Foam Frothing 1L**  
Lid not included



**V111D Twister includes**  
Jar, Twister lid, Vented gripper lid  
and spatula



V112C - Cone



V112D - Flat Hard



V112B - Vented Gripper



V112 - Flat Soft





Cafetto is the industry leader in effective eco-friendly and organic solutions, offering cleaning products to improve equipment performance and simplify cleaning processes.



## CLEANING



E202  
MFC Blue milk frother  
cleaning liquid concentrate - 1L



E207  
MFC Green milk frother  
cleaning liquid concentrate - 1L



E204  
Grinder Cleaner - GC2 - 450g



E203  
TEVO Maxi Tablets - 150 tablets



E208  
Espresso Machine Cleaner - EC2 - 1.1Kg



E201  
EVO Espresso Machine Cleaner - 1.1Kg







Gear.

# BARISTA KIT

<b>TAMPERS</b> Black hand tamper Rubber counter tamp pad	<b>PO CODE</b> A018 A021	<b>PRODUCT INFO</b> 57mm / flat 1
<b>MILK JUGS</b> Etched stainless steel 0.3 litre Etched stainless steel 0.6 litre Etched stainless steel 1 litre Black Teflon 0.3 litre Black Teflon 0.6 litre	<b>PO CODE</b> A004C A005 A006 A010E A010F	<b>PRODUCT INFO</b> 1 1 1 1 1
<b>SILICONE MILK JUG HANDLE COVERS</b> 20oz/600ml Red 20oz/600ml Blue 20oz/600ml Yellow	<b>PO CODE</b> A042 A042A A042B	<b>PRODUCT INFO</b> 1 1 1
<b>THERMOMETERS</b> Standard Fahrenheit thermometer Centigrade thermometer Long dual thermometer Long thermometer clip Triangular thermometer clip	<b>PO CODE</b> A001 A001C A003 A004 A004A	<b>PRODUCT INFO</b> 1" dial / 5" probe 1 1" dial / 5" probe 2" dial / 8" probe 1 1
<b>CLEANING</b> Pallo Grinderminder Brush Pallo Coffectool Steamy Wanda - small green Steamy Wanda - large red	<b>PO CODE</b> E007 E020 E013 E014	<b>PRODUCT INFO</b> 1 1 6mm bristle diameter 7.25mm bristle diameter



## ESPRESSO ESSENTIALS

ILSA Italian cocoa shaker (stainless steel )	A011	1
BTB branded lined shot glasses	A013	2oz / 12 pack
BTB branded lined shot glass	A013A	2oz / single
Chrome mini whisk	A014	1
Milk spatula (stainless steel)	A015	1
On Balance digital grinder scales	A030	1
Squirty bottle	A031	35cl / 12oz
Barista Cloth Set	A080	Pack of 4
Rubber backflush insert	E003	1
BTB Flicker	E001`	1
<b>KNOCKBOXES</b>		
Square open base knockout box	A023	1
Square closed base knockout box	A024	1
Rubber gasket for knockout box	A039	1
<b>SPOONS</b>		
Long handled latte spoon	A047	1
7 gram coffee scoop	A055	1
<b>Si CREAM WHIPPER</b>		
Si cream whipper	A059	1 litre
Si replacement nitrous oxide gas charges	A060	10 x 8.4g
<b>Si CREAM WHIPPER SPARE PARTS</b>		
Si spare nozzle gasket turret (3042)	RA001	1
Si spare nozzle rose (3048)	RA002	1
Si head valve (2941)	RA003	1
Si gasket (6334)	RA004	1
Si charge holder (3045)	RA006	1
<b>SAUCE PUMP</b>		
Server sauce pump stainless steel	A028	1
Server sauce jar stainless steel	A029	1

SAUCE PUMP SPARE PARTS	PO CODE	PACK SIZE
Pump brush (82049)	RB001	1
Pump brush (21 82526)	RB002	1
Collar gagging 25oz reduction (82022)	RB003	1
Collar locking	RB003A	1
Insert head (82018)	RB004	1
Knob black (82023-000)	RB005	1
Nut discharge tube (82027)	RB006	1
O-ring (1 05127)	RB007	1
O-ring (1 5/16 82323)	RB008	1
Piston & stem assembly (82013)	RB009	1
Replacement seal kit (83003)	RB010	1
Seal white (part of 83003 83005)	RB011	1
Spare part kit (82533)	RB012	1
Spring (82016)	RB013	1
Tube head (82017)	RB014	1
Washer (82015)	RB015	1

## CUPS

<b>CHEVRON CUPS (PLA)</b>	<b>PO CODE</b>	<b>PACK SIZE</b>
6oz Lemon Chevron	C005	2000
12oz Granite Chevron	C012	1000
<b>HOT CUP LIDS</b>	<b>PO CODE</b>	<b>PACK SIZE</b>
6oz traveller lid - white	C005A	1000
12-20oz Solo traveller lid (T316R) - white	C019	1000
<b>COLD CUPS AND LIDS</b>	<b>PO CODE</b>	<b>PACK SIZE</b>
12-14oz clear Solo cup (Squat)	C034A	1000
Clear Solo domed lid (DLR626) to fit TP12S	C039	1000
Sweetbird Reusable Cold Cup & Lid	C100	100
<b>SAMPLE CUPS AND LIDS</b>	<b>PO CODE</b>	<b>PACK SIZE</b>
Zuma branded 4oz Solo paper sample cup (case)	C003	1000
Zuma branded 4oz Solo paper sample (sleeve)	SSC003	50
<b>MISC.</b>	<b>PO CODE</b>	<b>PACK SIZE</b>
Straw - 8" long, Paper / 8mm diameter / individually wrapped	C051	100
Wooden stick stirrer	C044	1000



# AN AWARD WINNING COLLECTION



Sweetbird, Zuma and Bristol Syrup Company have won multiple awards over the years including the coveted 3 star Great Taste Award for Sweetbird Rose syrup.



**BEYOND<sup>®</sup>**  
THE BEAN  
FORWARD THINKING IN DRINKING

e: [sales@beyondthebean.com](mailto:sales@beyondthebean.com)

t: +44 (0) 117 953 3522

  [beyondthebean](https://www.beyondthebean.com)  
[beyondthebean.com](https://www.beyondthebean.com)