

# Product Range

---

2024 BROCHURE



  
SWEETBIRD®  
BRISTOL ENGLAND

**ZUMA**

BRISTOL  
SYRUP CO.  


blendtec®  
COMMERCIAL



Sweetbird is all about getting creative with ingredients and flavours, then pouring this into everything they do so you can make drinks that look and taste delicious every time. Obsessed with perfection, Sweetbird travel the globe to spot new trends and continually experiment with ingredients and recipes – all while steering clear of artificial preservatives\* and colourings. This helps ensure the Sweetbird product range not only tastes exceptional but delivers the innovation, versatility and simplicity customers are looking for.



Follow @hellosweetbird for recipes, product news and inspiration



\*except pureé, Liquid Frappé & Granita Base, sugar-free syrups, hazelnut and toffee nut syrups.

# SYRUP



## CLASSIC SYRUPS (1Ltr)

FLAVOUR	PO CODE
Almond	NSB100
Amaretto	NSB101
Brown Sugar	NSB118
Cane Sugar	NSB102
Caramel (SF)	NSB103
Chai	NSB104
Chocolate	NSB105
Cinnamon	NSB107
English Toffee	NSB108
French Vanilla	NSB109
Gingerbread	NSB110
Hazelnut (SF)	NSB111
Irish Cream	NSB112
Mint	NSB113
Speculoos	NSB117
Vanilla (SF)	NSB114
White Chocolate	NSB115



(SF) these syrups are also available in our sugar-free collection, on the page opposite

## CREATIVE SYRUPS (1Ltr)

FLAVOUR	PO CODE
Butterscotch	NSB200
Chilli	NSB201
Cinnamon Bun	NSB220
Coconut	NSB202
Eggnog (seasonal)	NSB203
Honeycomb	NSB212
Mince Pie	NSB222
Peanut Butter	NSB205
Pistachio	NSB219
Praline	NSB224
Popcorn	NSB221
Pumpkin Spice (seasonal)	NSB206
Rose	NSB218
Salted Caramel (SF)	NSB207
S'mores (seasonal)	NSB208
Toasted Marshmallow (seasonal)	NSB209
Toffee Nut	NSB216



(SF) this syrup is also available in our sugar-free collection, on the page opposite  
(seasonal) these syrups may not be available all year round as they are produced for certain seasons

# SYRUP



## BOTANICAL SYRUPS (1Ltr)

FLAVOUR	PO CODE
Hibiscus	NSB454
Rose	NSB450



All Sweetbird syrups:

- Packaging Case: 6 x 1 litre
- 30% Post-consumer recycled plastic bottles
- Registered with The Vegan Society



## LEMONADE SYRUPS (1Ltr)

FLAVOUR	PO CODE
Lemonade	NSB600
Raspberry & Pomegranate	NSB602
Pink Guava & Lime	NSB603



## SUGAR-FREE SYRUPS (1Ltr)

FLAVOUR	PO CODE
Caramel	NSB500
Hazelnut	NSB502
Lemon Iced Tea	NSB509
Peach Iced Tea	NSB504
Raspberry Iced Tea	NSB507
Salted Caramel	NSB506
Unflavoured	NSB505
Vanilla	NSB503



# SYRUP



## FRUIT SYRUPS (1Ltr)

FLAVOUR	PO CODE
Banana	NSB300
Cherry	NSB302
Dragon Fruit & Papaya	NSB315
Grenadine	NSB313
Lime	NSB304
Orange	NSB305
Peach	NSB307
Raspberry	NSB309
Strawberry	NSB310
Watermelon	NSB314



## ICED TEA SYRUPS (1Ltr)

FLAVOUR	PO CODE
Cherry Blossom Iced Tea	NSB407
Cucumber & Mint Iced Green Tea	NSB405
Iced Tea	NSB400
Jasmine Lime Iced Tea	NSB401
Passionfruit & Lemon Iced Tea	NSB402
Peach Iced Tea (SF)	NSB403
Raspberry Iced Tea (SF)	NSB404
Sugar-free Lemon Iced Tea	NSB509
Watermelon Iced Green Tea	NSB406



(SF) these syrups are also available in our sugar-free collection, which can be found on the previous page

## RETAIL SYRUPS (6 x 250ml glass bottles)

FLAVOUR	PO CODE
Caramel	NSB701
Hazelnut	NSB703
Vanilla	NSB702

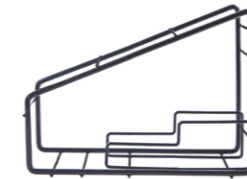


# SYRUP



## DISPLAY STAND

A038



## SYRUP PUMP

A035



# FRAPPÉ



FLAVOUR	PO CODE
Caffé ( <i>vegan</i> )	B361D
Chocolate	B365D
Cookies & Cream	B359D
Mocha	B362C
Sticky Toffee	B364D
Vanilla Bean ( <i>vegan</i> )	B363D
Liquid Frappé & Granita Base ( <i>vegan</i> )	B358



- Packaging:
  - Tubs - 2 x 2kg tubs
  - Bags - 4 x 1kg bags
  - Liquid Frappé and Granita Base - 4 x 1.9 litre bottles
- Free from artificial colours and flavours
- Free from preservatives \*
- Registered with The Vegetarian Society
- Liquid Frappé & Granita Base, Vanilla Bean and Caffé Frappés registered with The Vegan Society

\*except Liquid Frappé & Granita Base



## LARGE SCOOP 60CC

A051 - For use with Sweetbird Frappés



## FRAPPÉ & GRANITA PUMP

A044



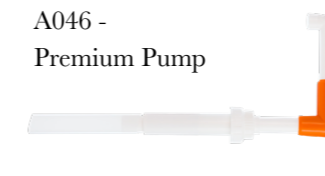
# PUREÉ



FLAVOUR	PO CODE
Banana	B601A
Mango	B603A
Passionfruit	B604A
Raspberry	B605A
Strawberry	B606A



- Packaging - 6 x 1 litre bottles
- Made with real fruit
- Free from artificial colours
- Gluten and dairy free
- Registered with The Vegan Society



# SMOOTHIE



FLAVOUR	PO CODE
Mango & Passionfruit	B398B
Mixed Berry	B397B
Peach	B392B
Strawberry	B395B



- Packaging - 8 x 1 litre cartons
- Free from artificial colours, preservatives and flavours
- Made with real fruit
- Registered with The Vegan Society



SWEETBIRD.COM

# ZUMA

Zuma has been creating their collection for almost 20 years, ensuring there's a drink for everyone. The hot chocolate blends are original, dark, single origin, Fairtrade, thick and white. Zuma have also created sauces, chai, toppings and plant powders\*. The range is simple, just like the ingredients. It's not that Zuma are stubborn - they just won't compromise when it comes to taste and quality.



Follow @zuma.drinks or visit [zumadrinks.com](http://zumadrinks.com) to see all they have to offer



\*Turmeric Chai includes natural flavourings that are not plant based

# HOT CHOCOLATE

# ZUMA

## FLAVOUR

- Dark - 33% cocoa (bags)
- Dominican Republic - 35% cocoa (bags)
- Fairtrade Dark - 33% cocoa (tins)
- Original - 25% cocoa (bags)
- Original - 25% cocoa (tins)
- Thick (tins) - 25% cocoa
- White (bags)

## PO CODE

- B302C
- B323
- B307C
- B304C
- B305C
- B306C
- B308C

Packaging - 4 x 2kg tins



- Free from artificial colours, flavours and preservatives
- Registered with The Vegan Society (except White Chocolate)

Packaging - Case 8 x 1kg bags



# SAUCES

# ZUMA

## FLAVOUR

- Caramel
- Dark
- White

## PO CODE

- B923
- B920
- B922

- Free from artificial colours
- White and Caramel Sauce registered with The Vegetarian Society
- Dark Sauce registered with The Vegan Society

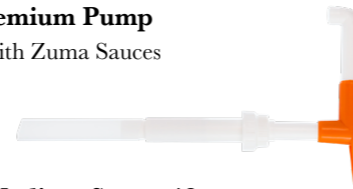


Packaging - 4 x 1.9 litre bottle



### A046 - Premium Pump

For use with Zuma Sauces



### A050A - Medium Scoop 43cc

For use with Zuma Thick and White Hot Chocolate



### A050 - Small Scoop 32cc

For use with Zuma Original, Dark, Dominican Republic (heaped), Fairtrade Dark Hot Chocolate, and Zuma Chai



### A049A - Mini Scoop 4cc

For use with Zuma Plant Based Powders



# CHAI

# ZUMA

## FLAVOUR

- Spiced
- Vanilla

## PO CODE

- B366C
- B367C



- Packaging - Case 4 x 1kg tins
- Free from artificial colours, flavours and preservatives
- Registered with The Vegan Society



# PLANT BASED POWDERS\*

# ZUMA

## FLAVOUR

- Beetroot
- Matcha
- Turmeric Chai

## PO CODE

- B375
- K040A
- B368



- Packaging - Case 10 x 100g pouches
- Registered with The Vegan Society
- No added sugar

\*Turmeric Chai includes natural flavourings that are not plant based



# TOPPINGS

# ZUMA

## TOPPING

- Biscuit Crumb
- Strawberry Pieces
- Mini Marshmallows

## PO CODE

- G106
- G107
- B5001



- Packaging:
  - Case 8 x 250g pouches - Biscuit Crumb
  - Case 8 x 30g pouches - Strawberry Pieces
  - Case 4 x 1Kg bags - Mini Marshmallows
- Biscuit Crumb and Strawberry Pieces Registered with The Vegan Society



ZUMADRINKS.COM

# BRISTOL<sup>®</sup> SYRUP CO.

**The Bristol Syrup Company is a collaboration between Beyond the Bean and the best of Bristol bartenders, distilling down years of experience to create a range of quality cocktail syrups and purées .**

From classic bar staples like orgeat and vanilla through to innovative, award-winning shrubs, sherbets and disco, our syrups are designed for bartenders. We believe the quality and taste of syrup should be as well considered as the chosen spirits, juices and fruits, which is why they are made in our Bristol based syrup plant, with British sugar.

Our syrups are favoured by bartenders around the country, stocked in over a third of the UK's top 50 Cocktail Bars 2023 and chosen by both high-volume bars such as Fridays and luxury venues like Claridge's.

We're proud to introduce new fruit purées and juices to the Bristol Syrup Company collection in 2023.

Visit [bristolsyrupcompany.com](https://bristolsyrupcompany.com)  





# SYRUP

FLAVOUR	PO CODE
No.1 Simple 1:1	BSC001A
No.2 Simple 2:1	BSC002A
No.3 Demerara	BSC003A
No.4 Raspberry	BSC004A
No.5 Passionfruit	BSC005A
No.6 Grenadine	BSC006A
No.7 Orgeat	BSC007A
No.8 Elderflower	BSC008A
No.9 Falernum	BSC009A
No.10 Coconut	BSC010A
No.11 Pineapple & Coconut	BSC011A
No.13 Raspberry Shrub	BSC013A
No.14 Cherry & Vanilla	BSC014A

FLAVOUR	PO CODE
No.15 Vanilla	BSC015A
No.16 Strawberry Shrub	BSC016A
No.17 Watermelon	BSC017A
No.18 Lime Sherbet	BSC018A
No.19 Disco Grenadine	BSC019A
No.20 Grapefruit Sherbet	BSC020A
No.21 Ginger	BSC021A
No.22 Mulled Spice	BSC022A
No.23 Yuzu Sherbet	BSC023A
No.24 Disco Blue	BSC024A
No.25 Disco Bubblegum	BSC025A
No.26 Caramel	BSC026A
No.27 Nogave	BSC027A



# PURÉES

FLAVOUR	PO CODE
Lime Juice	BSC101
Lemon Juice	BSC102
Mango Purée	BSC103
Passionfruit Purée	BSC104
Raspberry Purée	BSC105
Strawberry Purée	BSC106
Peach Purée	BSC107





Blendtec are the best, most reliable blenders on the market, designed for the high volume of ice blended drinks customers need. They're the worldwide industry standard and are powerful, tough and clever too. All Blendtec blenders have pre-programmed variable speeds, auto shut off & drinks cycles that ensure consistently blended drinks every time.

With models to suit all requirements, and budgets, they have the perfect blender for you and your business.



## BLENDERS



**V208 - Connoisseur 825**  
No jars



**V213 - Stealth 885 Blender**  
No jars



**V203 - SpaceSaver 825**  
No jars



**V121A - Stealth**  
Sound Enclosure



**V121 - Connoisseur**  
Sound Enclosure



**V122A - Connoisseur**  
Motor Enclosure

## RAPID RINSER

- V133 - Rapid Rinse Station - full kit (on-counter instillation)
- V134 - Rapid Rinser - only (in-sink instillation)
- V135A - Rapid Rinser, Lid Attachment
- V136 - Rapid Rinser Suction Cup Feet



## JARS & LIDS



**V111A - FourSide 1L**  
Lid not included



**FourSide 1L Jars & Hard Lid Set**  
V111J - FourSide Pink  
V111H - FourSide Yellow  
V111Q - FourSide Blue



**V112A - WildSide 1.5L**  
Lid not included



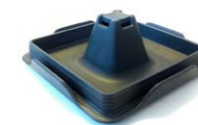
**WildSide 1.5L Jars & Hard Lid Set**  
V112F - WildSide Pink  
V112E - WildSide Yellow  
V112G - WildSide Blue



**V111M - Cold Foam Frothing 1L**  
Lid not included



**V111D Twister includes**  
Jar, Twister lid, Vented gripper lid and spatula



V112C - Cone



V112D - Flat Hard



V112B - Vented Gripper



V112 - Flat Soft



Cafetto is the industry leader in effective eco-friendly and organic solutions, offering cleaning products to improve equipment performance and simplify cleaning processes.



## CLEANING



E202  
MFC Blue milk frother  
cleaning liquid concentrate - 1L



E207  
MFC Green milk frother  
cleaning liquid concentrate - 1L



E204  
Grinder Cleaner - GC2 - 450g



E203  
TEVO Maxi Tablets - 150 tablets



E208  
Espresso Machine Cleaner - EC2 - 1.1Kg





Gear.

## BARISTA KIT

### TAMPERS

Black hand tamper  
Rubber counter tamp pad

### MILK JUGS

Etched stainless steel 0.3 litre  
Etched stainless steel 0.6 litre  
Etched stainless steel 1 litre  
Black Teflon 0.3 litre  
Black Teflon 0.6 litre

### SILICONE MILK JUG HANDLE COVERS

20oz/600ml Red  
20oz/600ml Blue  
20oz/600ml Yellow

### THERMOMETERS

Standard Fahrenheit thermometer  
Centigrade thermometer  
Long dual thermometer  
Long thermometer clip  
Triangular thermometer clip

### CLEANING

Pallo Grinderminder Brush  
Pallo Coffeetool  
Steamy Wanda - small green  
Steamy Wanda - large red

### PO CODE

A018  
A021

### PRODUCT INFO

57mm / flat  
1

### PO CODE

A004C  
A005  
A006  
A010E  
A010F

### PRODUCT INFO

1  
1  
1  
1  
1

### PO CODE

A042  
A042A  
A042B

### PRODUCT INFO

1  
1  
1

### PO CODE

A001  
A001C  
A003  
A004  
A004A

### PRODUCT INFO

1" dial / 5" probe  
1 1" dial / 5" probe  
2" dial / 8" probe  
1  
1

### PO CODE

E007  
E020  
E013  
E014

### PRODUCT INFO

1  
1  
6mm bristle diameter  
7.25mm bristle diameter

# ESPRESSO ESSENTIALS

	PO CODE	PRODUCT INFO
ILSA Italian cocoa shaker (stainless steel)	A011	1
BTB branded lined shot glasses	A013	2oz / 12 pack
BTB branded lined shot glass	A013A	2oz / single
Chrome mini whisk	A014	1
Milk spatula (stainless steel)	A015	1
On Balance digital grinder scales	A030	1
Squirty bottle	A031	35cl / 12oz
Barista Cloth Set	A080	Pack of 4
Rubber backflush insert	E003	1
BTB Flicker	E001`	1
<b>KNOCKBOXES</b>	<b>PO CODE</b>	<b>PRODUCT INFO</b>
Square open base knockout box	A023	1
Square closed base knockout box	A024	1
Rubber gasket for knockout box	A039	1
<b>SPOONS</b>	<b>PO CODE</b>	<b>PRODUCT INFO</b>
Long handled latte spoon	A047	1
7 gram coffee scoop	A055	1
<b>iSi CREAM WHIPPER</b>	<b>PO CODE</b>	<b>PACK SIZE/ PRODUCT INFO</b>
iSi cream whipper	A059	1 litre
iSi replacement nitrous oxide gas charges	A060	10 x 8.4g
<b>CREAM WHIPPER SPARE PARTS</b>	<b>PO CODE</b>	<b>PRODUCT INFO</b>
iSi spare nozzle gasket turret (3042)	RA001	1
iSi spare nozzle rose (3048)	RA002	1
iSi head valve (2941)	RA003	1
iSi gasket (6334)	RA004	1
iSi charge holder (3045)	RA006	1
<b>SAUCE PUMP</b>	<b>PO CODE</b>	<b>PRODUCT INFO</b>
Server sauce pump stainless steel	A028	1
Server sauce jar stainless steel	A029	1

SAUCE PUMP SPARE PARTS	PO CODE	PACK SIZE
Pump brush (82049)	RB001	1
Pump brush (21 82526)	RB002	1
Collar gagging 25oz reduction (82022)	RB003	1
Collar locking	RB003A	1
Insert head (82018)	RB004	1
Knob black (82023-000)	RB005	1
Nut discharge tube (82027)	RB006	1
O-ring (1 05127)	RB007	1
O-ring (1 5/16 82323)	RB008	1
Piston & stem assembly (82013)	RB009	1
Replacement seal kit (83003)	RB010	1
Seal white (part of 83003 83005)	RB011	1
Spare part kit (82533)	RB012	1
Spring (82016)	RB013	1
Tube head (82017)	RB014	1
Washer (82015)	RB015	1

# CUPS

CHEVRON CUPS (PLA)	PO CODE	PACK SIZE
6oz Lemon Chevron	C005	2000
12oz Granite Chevron	C012	1000
<b>HOT CUP LIDS</b>	<b>PO CODE</b>	<b>PACK SIZE</b>
6oz traveller lid - white	C005A	1000
12-20oz Solo traveller lid (T316R) - white	C019	1000
<b>COLD CUPS AND LIDS</b>	<b>PO CODE</b>	<b>PACK SIZE</b>
12-14oz clear Solo cup (Squat)	C034A	1000
Clear Solo domed lid (DLR626) to fit TP12S	C039	1000
Sweetbird Reusable Cold Cup & Lid	C100	100
<b>SAMPLE CUPS AND LIDS</b>	<b>PO CODE</b>	<b>PACK SIZE</b>
Zuma branded 4oz Solo paper sample cup (case)	C003	1000
Zuma branded 4oz Solo paper sample (sleeve)	SSC003	50
<b>MISC.</b>	<b>PO CODE</b>	<b>PACK SIZE</b>
Straw - 8" long, Paper / 8mm diameter / individually wrapped	C051	100
Wooden stick stirrer	C044	1000

# AN AWARD WINNING COLLECTION

Sweetbird, Zuma and Bristol Syrup Company have won multiple awards over the years including the coveted 3 star Great Taste Award for Sweetbird Rose syrup.



**BEYOND**<sup>®</sup>  
THE BEAN

FORWARD THINKING IN DRINKING

e: [sales@beyondthebean.com](mailto:sales@beyondthebean.com)

t: +44 (0) 117 953 3522

  [beyondthebean](https://www.beyondthebean.com)

[beyondthebean.com](https://www.beyondthebean.com)