

Product Range

2023 BROCHURE




SWEETBIRD®
BRISTOL, ENGLAND

ZUMA®

**BRISTOL
SYRUP CO.**

Gasy®

blendtec®
COMMERCIAL



Sweetbird is all about getting creative with ingredients and flavours, then pouring this into everything they do so you can make drinks that look and taste delicious every time. Obsessed with perfection, Sweetbird travel the globe to spot new trends and continually experiment with ingredients and recipes – all while steering clear of artificial preservatives* and colourings. This helps ensure the Sweetbird product range not only tastes exceptional but delivers the innovation, versatility and simplicity customers are looking for.



Follow @hellosweetbird for recipes, product news and inspiration



*except pureé, Liquid Frappé & Granita Base, sugar-free syrups, hazelnut and toffee nut syrups.

SYRUP



CLASSIC SYRUPS (1Ltr)

FLAVOUR	PO CODE
Almond	NSB100
Amaretto	NSB101
Cane Sugar	NSB102
Caramel (SF)	NSB103
Chai	NSB104
Chocolate	NSB105
Cinnamon	NSB107
English Toffee	NSB108
French Vanilla	NSB109
Gingerbread (SF)	NSB110
Hazelnut (SF)	NSB111
Irish Cream	NSB112
Mint	NSB113
Speculoos	NSB117
Vanilla (SF)	NSB114
White Chocolate	NSB115



CREATIVE SYRUPS (1Ltr)

FLAVOUR	PO CODE
Butterscotch	NSB200
Coconut	NSB202
Eggnog (seasonal)	NSB203
Honeycomb	NSB212
Peanut Butter	NSB205
Pumpkin Spice (seasonal)	NSB206
Rose	NSB218
Salted Caramel (SF)	NSB207
S'mores	NSB208
Toasted Marshmallow	NSB209
Toffee Nut	NSB216



(SF) this syrup is also available in our sugar-free collection
(seasonal) this syrup may not be available all year round but is produced for certain seasons

SYRUP



BOTANICAL SYRUPS (1Ltr)

FLAVOUR	PO CODE
Garden Mint	NSB451
Ginger	NSB452
Rose	NSB450



All Sweetbird syrups:

- Packaging Case: 6 x 1 litre
- 30% Post-consumer recycled plastic bottles
- Registered with The Vegan Society



LEMONADE SYRUPS (1Ltr)

FLAVOUR	PO CODE
Lemonade	NSB600
Raspberry & Pomegranate	NSB602
Pink Guava & Lime	NSB603



SUGAR-FREE SYRUPS (1Ltr)

FLAVOUR	PO CODE
Caramel	NSB500
Gingerbread (seasonal)	NSB501
Hazelnut	NSB502
Lemon Iced Tea	NSB509
Peach Iced Tea	NSB504
Raspberry Iced Tea	NSB507
Salted Caramel	NSB506
Unflavoured	NSB505
Vanilla	NSB503



SYRUP



FRUIT SYRUPS (1Ltr)

FLAVOUR	PO CODE
Banana	NSB300
Cherry	NSB302
Grenadine	NSB313
Lime	NSB304
Orange	NSB305
Peach	NSB307
Raspberry	NSB309
Strawberry	NSB310
Watermelon	NSB314



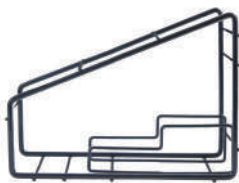
ICED TEA SYRUPS (1Ltr)

FLAVOUR	PO CODE
Cucumber & Mint Iced Green Tea	NSB405
Iced Tea	NSB400
Jasmine Lime Iced Tea	NSB401
Passionfruit & Lemon Iced Tea	NSB402
Peach Iced Tea (SF)	NSB403
Raspberry Iced Tea (SF)	NSB404
Sugar-free Lemon Iced Tea	NSB509
Watermelon Iced Green Tea	NSB406



DISPLAY STAND

A038



SYRUP PUMP

A035



(SF) this syrup is also available in our sugar-free collection
(seasonal) this syrup may not be available all year round but is produced for certain seasons

SYRUP



RETAIL SYRUPS (6 x 250ml glass bottles)

FLAVOUR	PO CODE
Caramel	NSB701
Gingerbread	NSB704
Hazelnut	NSB703
Vanilla	NSB702
Sugar-free Hazelnut	NSB707
Sugar-free Salted Caramel	NSB705
Sugar-free Vanilla	NSB706



RETAIL SYRUP GIFT SET (6 x 3 pack 250ml glass bottles)

FLAVOUR	PO CODE
Sweetbird Classic Syrup	NSB750
Sweetbird Seasonal Syrup	NSB751



FRAPPÉ



FLAVOUR	PO CODE
Caffé (vegan)	B361B
Chocolate	B365A
Cookies & Cream	B359
Mocha	B362A
Sticky Toffee	B364A
Vanilla Bean (vegan)	B363A
Yogurt	B360A
White Chocolate	B358
Liquid Frappé & Granita Base (vegan)	B358



- Packaging
2 x 2kg tubs
- Packaging
4 x 1.9 litre bottles

- Free from artificial colours and preservatives
- Registered with The Vegetarian Society
- Liquid Frappé & Granita Base, Vanilla Bean and Caffé Frappés registered with The Vegan Society

A051 - Large Scoop 60cc
For use with Sweetbird Frappés



A044 - Frappé & Granita Base pump



PUREÉ



FLAVOUR	PO CODE
Banana	B601A
Mango	B603A
Passionfruit	B604A
Raspberry	B605A
Strawberry	B606A



- Packaging - 6 x 1 litre bottles
- Made with real fruit
- Free from artificial colours
- Gluten and dairy free
- Registered with The Vegan Society

A046 -
Premium Pump



SMOOTHIE



FLAVOUR	PO CODE
Lemon	B399
Mango & Passionfruit	B398
Mango	B391
Peach	B392
Raspberry & Blackcurrant	B397
Strawberry & Banana	B393
Strawberry	B395



- Packaging - 8 x 1 litre cartons
- Free from artificial colours, preservatives and flavours
- Made with real fruit
- Fat and dairy free
- Registered with The Vegan Society



SWEETBIRD.COM

ZUMA®

Zuma has been creating their collection for almost 20 years, ensuring there's a drink for everyone.

The hot chocolate blends are original, dark, Fairtrade, thick and white. Zuma have also created sauces, chai and plant powders*.

The range is simple, just like the ingredients. It's not that Zuma are stubborn - they just won't compromise when it comes to taste and quality.



Follow @zuma.drinks or visit zumadrinks.com to see all they have to offer



*Turmeric Chai includes natural flavourings that are not plant based

HOT CHOCOLATE

ZUMA®

FLAVOUR	PO CODE
Dark - 33% cocoa (bags)	B302A
Fairtrade Dark - 33% cocoa (tins)	B307A
Original - 25% cocoa (bags)	B304A
Original - 25% cocoa (tins)	B305A
Organic - 45% cocoa (pillow pack)	B321A
Thick (tins) - 25% cocoa	B306A
White (tins)	B308

Packaging - Case 8 x 1kg bags



- Free from artificial colours, flavours and preservatives
- Registered with The Vegan Society (except White Chocolate)

Packaging - 4 x 2kg tins except for White which is 2 x 2kg tins



SAUCES

ZUMA®

FLAVOUR	PO CODE
Caramel	B923
Dark	B920
White	B922

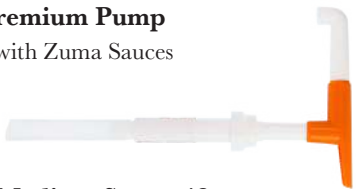
- Free from artificial colours
- White and Caramel Sauce registered with The Vegetarian Society
- Dark Sauce registered with The Vegan Society



Packaging - 4 x 1.9 litre bottle



A046 - Premium Pump
For use with Zuma Sauces



A050A - Medium Scoop 43cc
For use with Zuma Thick, Organic and White Hot Chocolate



A050 - Small Scoop 32cc
For use with Zuma Original, Dark and Fairtrade Dark Hot Chocolate, and Zuma Chai



A049A - Mini Scoop 4cc
For use with Zuma Plant Based Powders



CHAI

ZUMA®

FLAVOUR	PO CODE
Spiced	B366A
Vanilla	B367A

- Packaging - Case 4 x 1kg tins
- Free from artificial colours, flavours and preservatives
- Registered with The Vegan Society



PLANT BASED POWDERS*

ZUMA®

FLAVOUR	PO CODE
Beetroot	B375
Matcha	K040
Turmeric Chai	B368

- Packaging:
 - Case 10 x 100g pouches - Beetroot, Turmeric Chai*
 - Case 12 x 100g pouches - Matcha
- Registered with The Vegan Society
- No added sugar



*Turmeric Chai includes natural flavourings that are not plant based



TOPPINGS

ZUMA®

TOPPING	PO CODE
Mini Marshmallows	B5001

Packaging - 4 x 1Kg bags



ZUMADRINKS.COM



Cosy is our delightful range of organic teas in award winning knit effect packaging. All organic certified and vegan approved, the black teas are also Fairtrade.

TEAS

Cosy

K027
Rooibos & Vanilla



K026
Peppermint



K020
Blueberry



K021
Breakfast



K022
Chamomile



K025
Lemon Green



K024
Jasmine Green

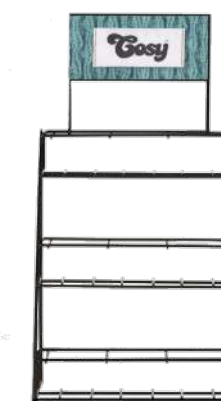


K023
Earl Grey



- Packaging - Case 6 x boxes of 20 bags
- Certified 100% organic by the Organic Food Federation
- Free from artificial colours, flavours and preservatives
- Registered with The Vegan Society
- English Breakfast and Earl Grey are Fairtrade

K200
Cosy tea rack



COSY-TEA.CO.UK



BRISTOL[®] SYRUP CO.

The Bristol Syrup Company is a collaboration between Beyond the Bean and the best of Bristol based bartenders, distilling down years of experience to create a range of authentic tasting cocktail syrups.

Designed in consultation with mixologists and made by us in Bristol we believe syrup shouldn't be an afterthought when making cocktails. The quality and taste of syrup should be as well considered as the chosen spirits, juices and fruits. After extensive research, brand development, testing, and building a syrup plant right here in Bristol, we were proud to launch the Bristol Syrup Company in September 2017. Created with passion and expertise, this range of 21 classic and more complex syrups are our contribution to the thriving cocktail scene in Bristol and across the UK.



Visit bristolsyrupcompany.com

SYRUP

FLAVOUR	PO CODE	FLAVOUR	PO CODE
No.1 Simple 1:1	BSC001A	No.14 Cherry & Vanilla	BSC014A
No.2 Simple 2:1	BSC002A	No.15 Vanilla	BSC015A
No.3 Demerara	BSC003A	No.16 Strawberry Shrub	BSC016A
No.4 Raspberry	BSC004A	No.17 Watermelon	BSC017A
No.5 Passionfruit	BSC005A	No.18 Lime Sherbet	BSC018A
No.6 Grenadine	BSC006A	No.19 Disco Grenadine	BSC019A
No.7 Orgeat	BSC007A	No.20 Grapefruit Sherbet	BSC020A
No.8 Elderflower	BSC008A	No.21 Ginger	BSC021A
No.9 Falernum	BSC009A	No.22 Mulled Spice	BSC022A
No.10 Coconut	BSC010A		
No.11 Pineapple & Coconut	BSC011A		
No.13 Raspberry Shrub	BSC013A		





Blendtec are the best, most reliable blenders on the market, designed for the high volume of ice blended drinks customers need. They're the worldwide industry standard and are powerful, tough and clever too. All Blendtec blenders have pre-programmed variable speeds, auto shut off & drinks cycles that ensure consistently blended drinks every time.

With models to suit all requirements, and budgets, they have the perfect blender for you and your business.



BLENDERS



V105 - EZ600 with
1 x Fourside jar & Gripper lid



V103 - SpaceSaver 825 with
2 x Fourside jar & Gripper lid



V102A - Nitro Stealth NBS 895 with
2 x Micronisers Blending Kit



V100 - Connoisseur 825 with
2 x Fourside jars & Soft lids
V210 - Connoisseur 825 with
2 x Wildside jars & Soft lids
V208 - Connoisseur 825 with
No jars



V099 - Stealth 885 Blender with
2 x Fourside jars & Soft lids
V215 - Stealth 885 Blender with
2 x Wildside jars & Soft lids
V213 - Stealth 885 Blender with
No jars



V121A - Stealth
Sound Enclosure



V121 - Connoisseur
Sound Enclosure



V122A - Connoisseur
Motor Enclosure

JARS & LIDS



V111A - FourSide 1L
Lid not included



FourSide 1L
Jars & Hard Lid Set
V111J - FourSide Pink
V111H - FourSide Yellow
V111Q - FourSide Blue



V112A - WildSide 1.5L
Lid not included



WildSide 1.5L
Jars & Hard Lid Set
V112F - WildSide Pink
V112E - WildSide Yellow
V112G - WildSide Blue



V111M - Cold Foam Frothing 1L
Lid not included



V115 - Rebel 1.5L
For use with Vitamix
blenders only
Lid not included



V111D Twister includes
Jar, Twister lid, Vented gripper lid
and spatula



V112C - Cone



V112D - Flat Hard



V112B - Vented Gripper



V112 - Flat Soft

RAPID RINSER

V133 - Rapid Rinse Station - full kit (on-counter instillation)
V134 - Rapid Rinser - only (in-sink instillation)
V135A - Rapid Rinser, Lid Attachment
V136 - Rapid Rinser Suction Cup Feet





Cafetto is the industry leader in effective eco-friendly and organic solutions, offering cleaning products to improve equipment performance and simplify cleaning processes.



CLEANING



E202
MFC Blue milk frother
cleaning liquid concentrate - 1L



E207
MFC Green milk frother
cleaning liquid concentrate - 1L



E204
Grinder Cleaner - 450g



E203
TEVO Maxi Tablets - 150 tablets



E201
EVO Espresso Machine Cleaner - 1Kg





Gear.

BARISTA KIT

TAMPERS

- Black hand tamper
- Rubber counter tamp pad

MILK JUGS

- Etched stainless steel 0.3 litre
- Etched stainless steel 0.6 litre
- Etched stainless steel 1 litre
- Black Teflon 0.3 litre
- Black Teflon 0.6 litre

SILICONE MILK JUG HANDLE COVERS

- 20oz/600ml Red
- 20oz/600ml Blue
- 20oz/600ml Yellow

THERMOMETERS

- Standard Fahrenheit thermometer
- Centigrade thermometer
- Long dual thermometer
- Long thermometer clip
- Triangular thermometer clip

CLEANING

- Grinder Brush
- Coffeehead Brush with spoon
- Steamy Wanda - small green
- Steamy Wanda - large red

PO CODE

- A018
- A021

PRODUCT INFO

- 57mm / flat
- 1

PO CODE

- A004C
- A005
- A006
- A010E
- A010F

PRODUCT INFO

- 1
- 1
- 1
- 1
- 1

PO CODE

- A042
- A042A
- A042B

PRODUCT INFO

- 1
- 1
- 1

PO CODE

- A001
- A001C
- A003
- A004
- A004A

PRODUCT INFO

- 1" dial / 5" probe
- 1 1" dial / 5" probe
- 2" dial / 8" probe
- 1
- 1

PO CODE

- E007
- E020
- E013
- E014

PRODUCT INFO

- 1
- 1
- 6mm bristle diameter
- 7.25mm bristle diameter

ESPRESSO ESSENTIALS

	PO CODE	PRODUCT INFO
ILSA Italian cocoa shaker (stainless steel)	A011	1
BTB branded lined shot glasses	A013	2oz / 12 pack
BTB branded lined shot glass	A013A	2oz / single
Chrome mini whisk	A014	1
Milk spatula (stainless steel)	A015	1
On Balance digital grinder scales	A030	1
Squirty bottle	A031	35cl / 12oz
Barista Cloth Set	A080	Pack of 4
Rubber backflush insert	E003	1
	PO CODE	PRODUCT INFO
KNOCKBOXES		
Square open base knockout box	A023	1
Square closed base knockout box	A024	1
Rubber gasket for knockout box	A039	1
	PO CODE	PRODUCT INFO
SPOONS		
Long handled latte spoon	A047	1
7 gram coffee scoop	A055	1
	PO CODE	PACK SIZE/ PRODUCT INFO
iSi CREAM WHIPPER		
iSi cream whipper	A059	1 litre
iSi replacement nitrous oxide gas charges	A060	10 x 8.4g
	PO CODE	PRODUCT INFO
CREAM WHIPPER SPARE PARTS		
iSi spare nozzle gasket turret (3042)	RA001	1
iSi spare nozzle rose (3048)	RA002	1
iSi head valve (2941)	RA003	1
iSi gasket (6334)	RA004	1
iSi charge holder (3045)	RA006	1
	PO CODE	PRODUCT INFO
SAUCE PUMP		
Server sauce pump stainless steel	A028	1
Server sauce jar stainless steel	A029	1

	PO CODE	PACK SIZE
SAUCE PUMP SPARE PARTS		
Pump brush (82049)	RB001	1
Pump brush (21 82526)	RB002	1
Collar gagging 25oz reduction (82022)	RB003	1
Collar locking	RB003A	1
Insert head (82018)	RB004	1
Knob black (82023-000)	RB005	1
Nut discharge tube (82027)	RB006	1
O-ring (1 05127)	RB007	1
O-ring (1 5/16 82323)	RB008	1
Piston & stem assembly (82013)	RB009	1
Replacement seal kit (83003)	RB010	1
Seal white (part of 83003 83005)	RB011	1
Spare part kit (82533)	RB012	1
Spring (82016)	RB013	1
Tube head (82017)	RB014	1
Washer (82015)	RB015	1

CUPS

	PO CODE	PACK SIZE
CHEVRON CUPS (PLA)		
6oz Lemon Chevron	C005	2000
12oz Granite Chevron	C012	1000
	PO CODE	PACK SIZE
HOT CUP LIDS		
6oz traveller lid - white	C005A	1000
12-20oz Solo traveller lid (T316R) - white	C019	1000
	PO CODE	PACK SIZE
COLD CUPS AND LIDS		
12-14oz clear Solo cup (Squat)	C034A	1000
Clear Solo domed lid (DLR626) to fit TP12S	C039	1000
	PO CODE	PACK SIZE
SAMPLE CUPS AND LIDS		
Zuma branded 4oz Solo paper sample cup (case)	C003	1000
Zuma branded 4oz Solo paper sample (sleeve)	SSC003	50
	PO CODE	PACK SIZE
MISC.		
Straw - 8" long, Paper / 8mm diameter / individually wrapped	C051	100
Wooden stick stirrer	C044	1000

Get in touch

EMAIL:
PHONE:
ADDRESS:

AN AWARD WINNING COLLECTION



Celebrating our 25th anniversary in 2022 was made all the sweeter by achieving an AA Grade for our syrup plant in our first ever BRC Global Standard for Food Safety Audit. We also won Best Non-Coffee Supplier at the Allegra European Coffee Awards. And now we have added a 3-star Great Taste Award to our ever growing accolades collection.



BEYOND[®]
THE BEAN
FORWARD THINKING IN DRINKING

e: sales@beyondthebean.com

t: +44 (0) 117 953 3522

  [beyondthebean](https://www.beyondthebean.com)
[beyondthebean.com](https://www.beyondthebean.com)